

FREEPORT OF RIGA



SEZ

SEZ Rīgas Brīvostā

Vladimirs Makarovs

24.11.11.

Business Card

Freeport of Riga in 2010

- By cargo turnover Latvia's biggest port and the third biggest port in the Baltic States (30 mln.t)
- Multifunctional port with cargo handling capacity 45 mln.t/year
- Port accounts for 5 200 direct and close to 15 000 indirect work places (railway, forwarding, agencies, trucking, etc.)
- Total port revenues reached EUR 402 mln and net profit EUR 46 mln
- Taxes paid into the state and Riga municipal budgets - EUR 28 mln



Business Card

Freeport of Riga – 11% of the City Territory

Main infrastructure figures

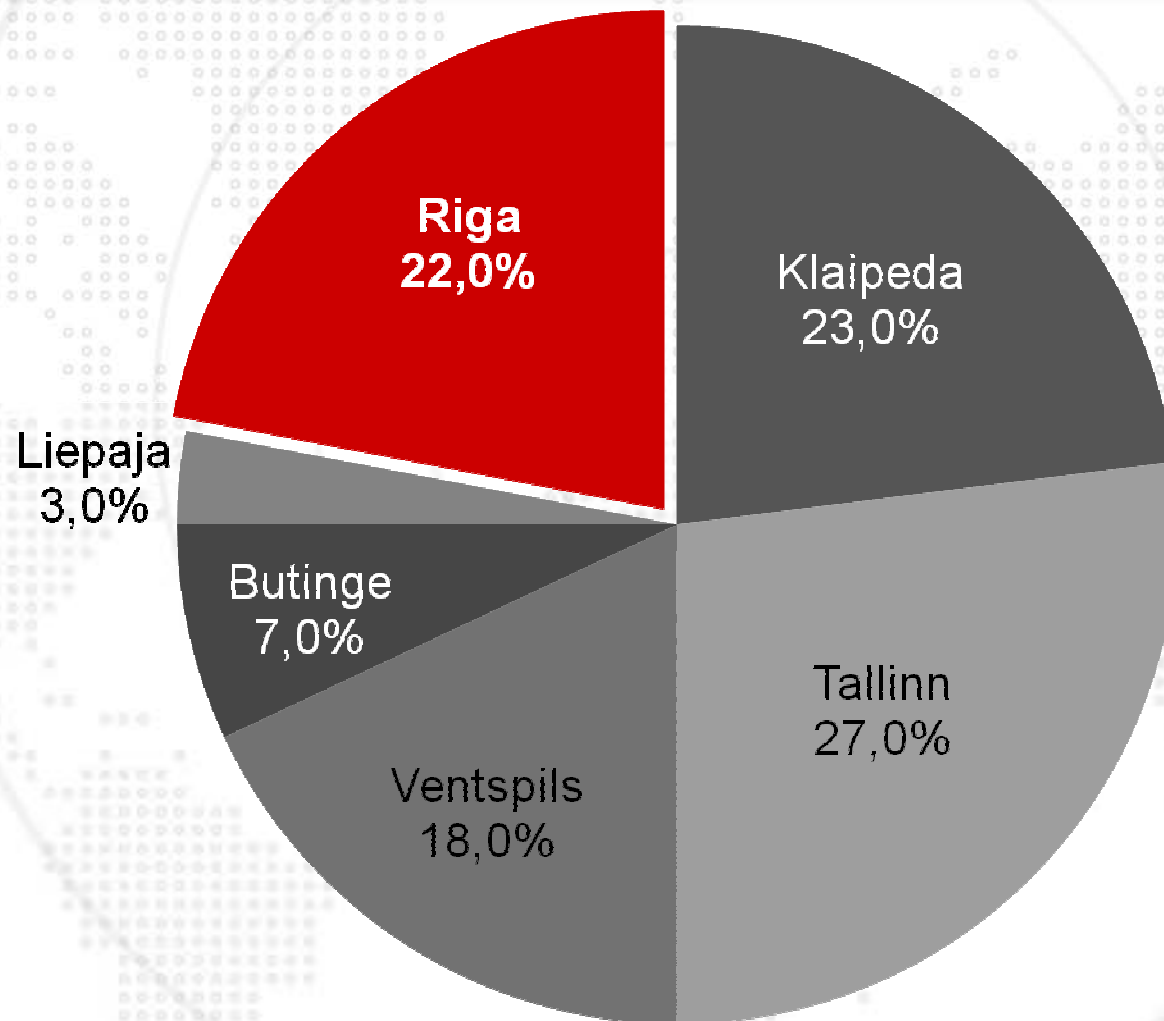
Total port area	6 348 ha
Total berths length	13.8 km
Max. depth	16.0 m
Max. vessels draft	14.7 m

Legend

- Port border line —
- Railway - - -
- Main roads —

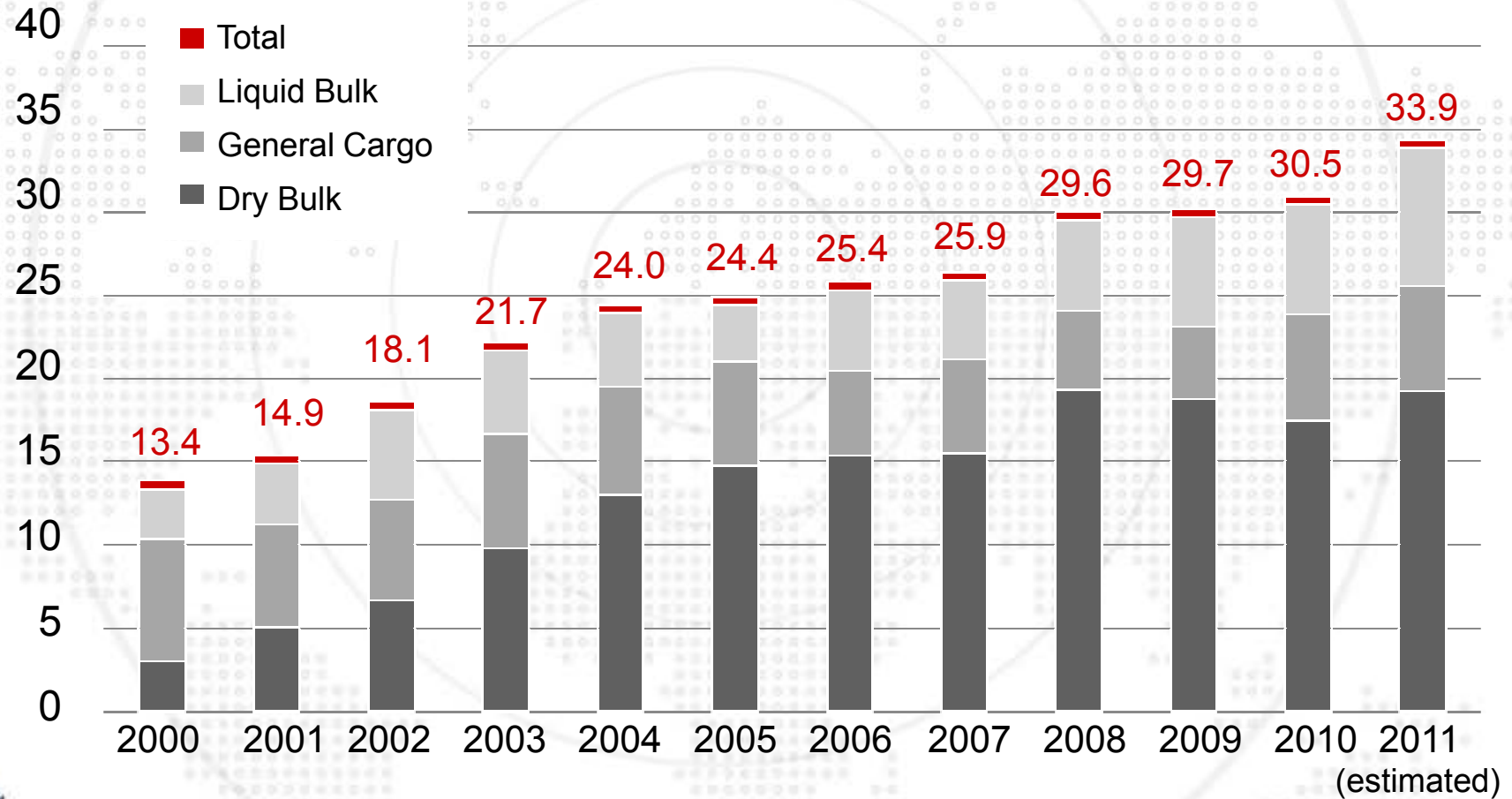
Location

Market Shares of Ports of the Baltic Countries in 2010



Performance

Cargo Turnover at the Freeport of Riga (mln. t)

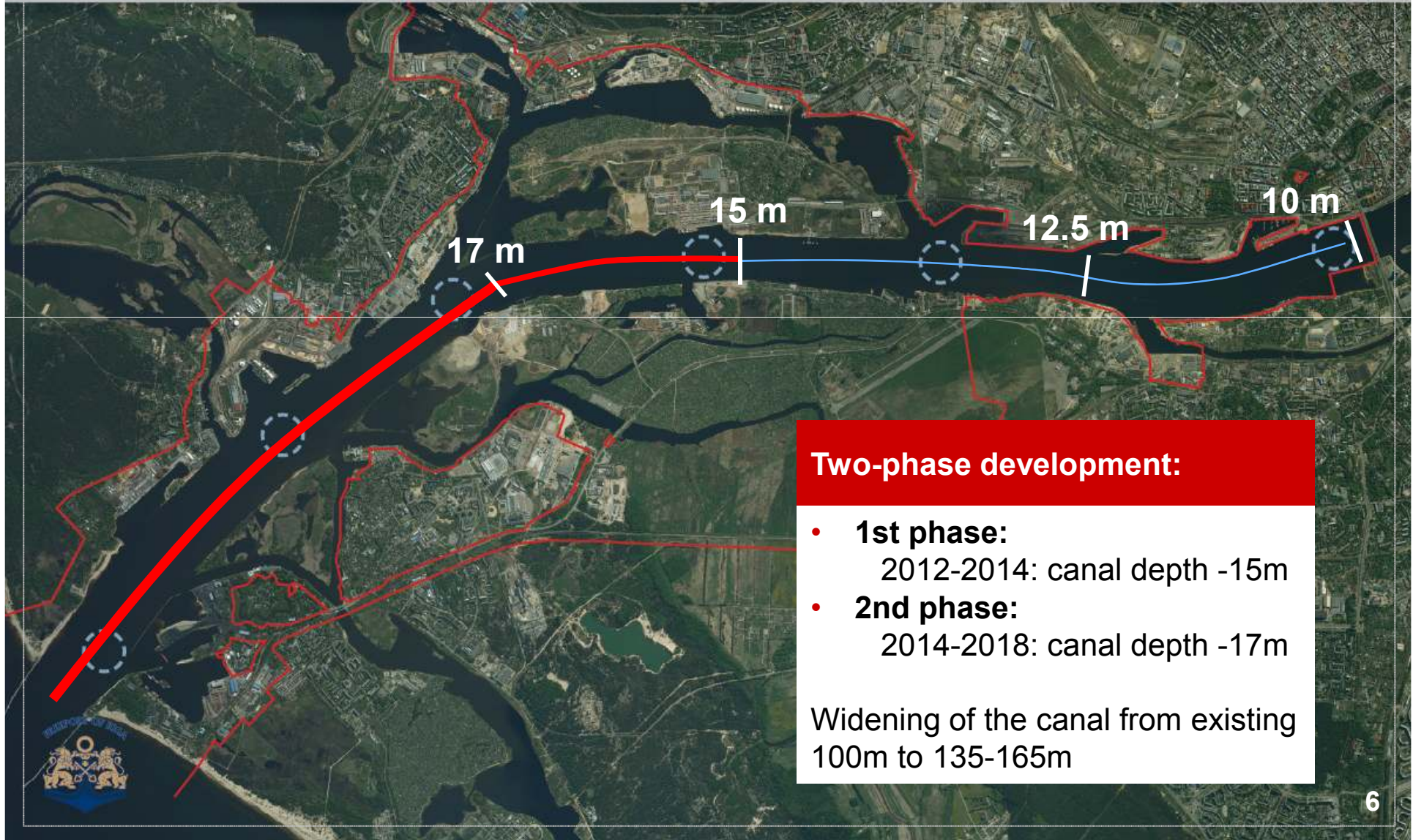


- Average annual growth rate **8.8%**



Development

Deepening of the Fairway (2/2)



Development

Dry Bulk Complex on the *Krievu sala* Island

- Project: Relocation of Port Activities from the City Center to the *Krievu sala* island
- Project duration: 2009-2013
- Investment: EUR 153 mln.
- Territory: 56 ha
- Capacity 17-22 mln tons/year
- 4 berths of 1180 m total length



Development

Diverse Cargo Terminals on the *Kundziņsala* (1/2)

- Total territory: 181 ha
- Project duration: 2010-2020
- Investment: EUR 239 mln.
- 5 terminals with different profiles:
containers, cold stores, fertilizer terminal,
grain terminal, logistics park



Development

Diverse Cargo Terminals on the *Kundziņsala* (2/2)

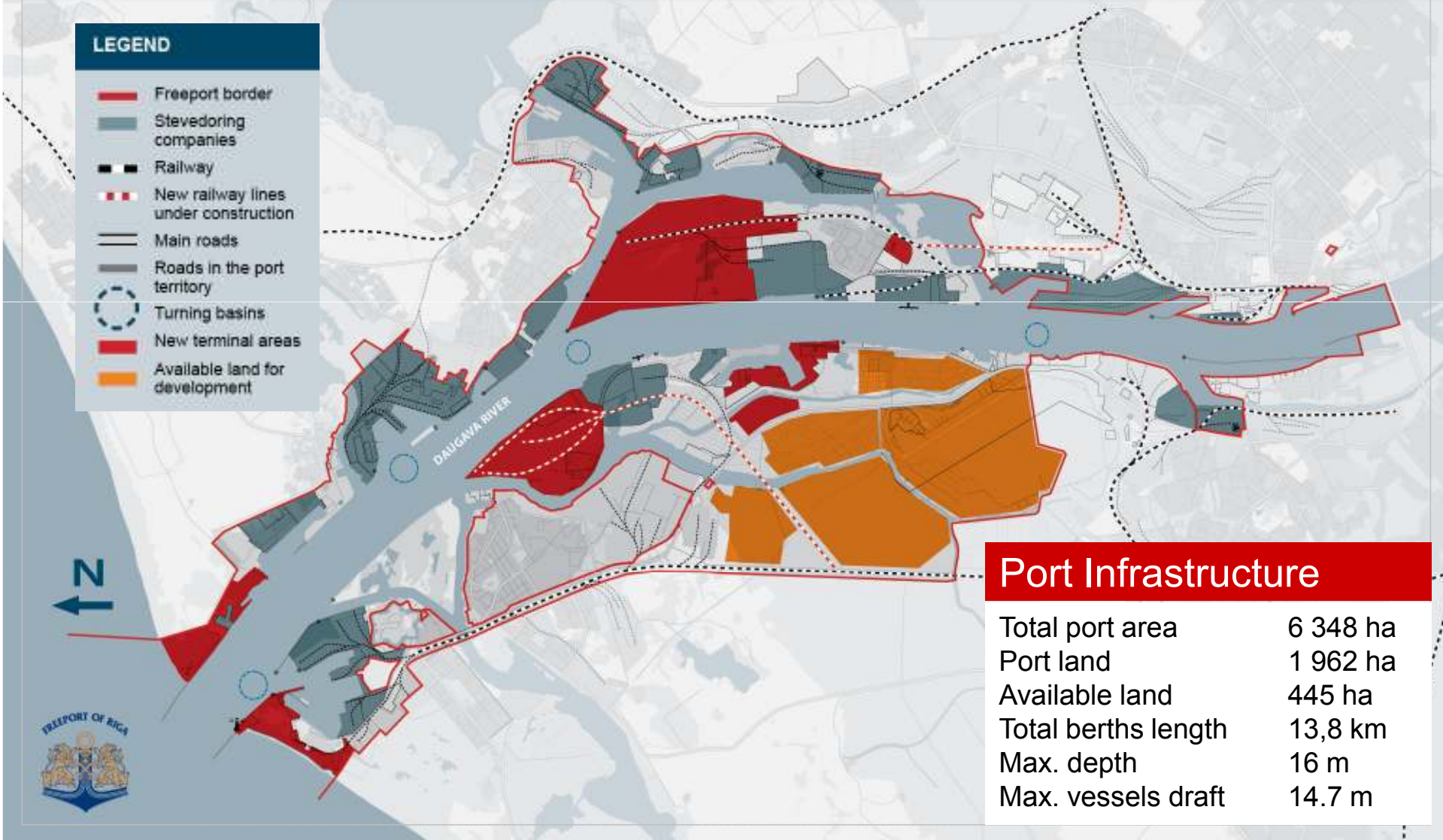


Infrastructure

Port Infrastructure

LEGEND

- Freeport border
- Stevedoring companies
- Railway
- New railway lines under construction
- Main roads
- Roads in the port territory
- Turning basins
- New terminal areas
- Available land for development



Port Infrastructure

Total port area	6 348 ha
Port land	1 962 ha
Available land	445 ha
Total berths length	13,8 km
Max. depth	16 m
Max. vessels draft	14.7 m

Available Territories for Development



Available territories

- Approx. **445 ha** are presently available for the development of new facilities (distribution, logistics, warehousing, etc.)

Investment

Status of a Licensed Company and the Free Zone Regime

Freeport status provides for substantial tax reductions

- Status of a licensed company allows to receive direct tax relieves
- Licensed company fulfilling certain requirements of the Free zone regime can receive both direct and indirect tax relieves
- Licenses are issued for 5 years by the Freeport of Riga Authority

Tax relieves:

Direct taxes

Income tax	80 %
Real estate duty	80-100%

Indirect taxes

Value added tax	100 %
Excise tax	100 %
Customs duty	100 %



FREPORT OF RIGA



Thank you for your attention!